

DESCRIPTION : ABOVE PCB/BELOW PCB, DECK AND PUSH ROD LOCATION ARE AS VIEW BY USER.

PRODUCT NO.	PUSH ROD LOCATION	STAND-OFF HEIGHT	MATING RECEPTACLE	P.C.B SIDE	RECOMMENDED P.C.B LAYOUT	MOUNT STYLE TO PCB AND PUSH ROD SIDE
(A) 74054-*****			(B)			
000CAS	RIGHT	0.0	100 POSITIONS (2x50) 0.8mm RECEPTACLE PART NO. 73277-101402LF	ABOVE	SEE DRAWING NO.: TA-1050	
020CAS	RIGHT	2.0				
022CAS	RIGHT	2.2				
028CAS	RIGHT	2.8				
040CAS	RIGHT	4.0				
043CAS	RIGHT	4.3				
050CAS	RIGHT	5.0				
100CAS	LEFT	0.0				
120CAS	LEFT	2.0				
122CAS	LEFT	2.2				
128CAS	LEFT	2.8				
140CAS	LEFT	4.0				
143CAS	LEFT	4.3				
150CAS	LEFT	5.0				
022CAR	RIGHT	2.2	100 POSITIONS (2x50) 0.8mm RECEPTACLE PART NO. 73277-101402LF	BELOW	SEE DRAWING NO.: TA-1050	
122CAT	LEFT	2.2				
522CAS	RIGHT	2.2	100 POSITIONS (2x50) 0.8mm RECEPTACLE PART NO. 73277-101402LF	BELOW	SEE DRAWING NO.: TA-1050	
540CAS	RIGHT	4.0				
543CAS	RIGHT	4.3				
550CAS	RIGHT	5.0				
622CAS	LEFT	2.2				
640CAS	LEFT	4.0				
643CAS	LEFT	4.3				
650CAS	LEFT	5.0				

2-STEP CARDBUS WITH METAL COVER						
322CAS	LEFT	2.2	100 POSITIONS (2x50) 0.8mm RECEPTACLE PART NO.	ABOVE	SEE DRAWING NO.: TA-1050	

2-STEP CARDBUS WITH SPECIAL PUSH ROD						
740CAS-B	LEFT PUSH ROD COLOR :BLACK	4.0	100 POSITIONS (2x50) 0.8mm RECEPTACLE PART NO.	BELOW	SEE DRAWING NO.: TA-1050	
840CAS	RIGHT PUSH ROD COLOR :BLACK	4.0	100 POSITIONS (2x50) 0.8mm RECEPTACLE PART NO.	BELOW	SEE DRAWING NO.: TA-1050	
740CAS-BLF	LEFT PUSH ROD COLOR :BLACK (Lead-Free type)	4.0	100 POSITIONS (2x50) 0.8mm RECEPTACLE PART NO.	BELOW	SEE DRAWING NO.: TA-1050	
840CASLF	RIGHT PUSH ROD COLOR :BLACK (Lead-Free type)	4.0	100 POSITIONS (2x50) 0.8mm RECEPTACLE PART NO.	BELOW	SEE DRAWING NO.: TA-1050	

NOTES:

- 8.0mm MIN CARD EJECT.
- EJECT TRAVEL: 9.50mm
- MATERIAL:
 - 3.1 EJECT HEADER ASS'Y
 - PLASTIC HOUSING: LCP UL94V-0 BLACK
 - PIN: COPPER ALLOY
 - PCB: FR4
 - PLASTIC GUIDE: POLYPHTHARAMID UL94V-0 BLACK
 - PLATE: STAINLESS
 - EMI CONTACT: PHOSPHOR BRONZE
 - 3.2 RECEPTACLE
 - PLASTIC: LCP 94V-0 NATURAL
 - PIN: BeCu
- FINISH
 - PIN :(FOR OTHER VERSIONS)
 - UNDER PLATING: 0.5um MIN. Ni
 - CONTACT AREA: 0.1um MIN. GOLD OVER 0.5um MIN. Pd-Ni
 - PIN :(FOR LEAD-FREE TYPE)
 - UNDER PLATING: 1.27um MIN. Ni
 - CONTACT AREA: 0.1um MIN. GOLD OVER 0.5um MIN. Pd-Ni
 - SOLDER TAIL: 2.5um MIN. PURE Tin.
 - GROUND SHIELD :
 - UNDER PLATING: 0.75um MIN. Ni
 - CONTACT SURFACE: 0.03um GOLD MIN. OVER PdNi 0.5um MIN.(GOLD FLASH DOUBLE SIDES) OR, 0.38um GOLD(ONE SIDE ONLY)
- PUSH ROD LOCATION AND P.C.B. ARE AS APPEARS INSTALLED
- DIM "X"

4.25±0.1	3.5±0.1	5.0±0.1
OTHERS	36,67	1,17,34,35,51,68
- DO NOT TOUCH AND KEEP CLEAN THE SURFACES OF PCB OF HEADER ASS'Y.
- P.C.B LAYOUT AND PIN ASSIGNMENT REFERED TO PART NUMBER TA-1050.

ORDERING INFORMATION

THREADED INSERT ASSEMBLED BY BERG		
NAME	PART NO.	Q'TY
(A) EJECT HEADER ASS'Y	74054-*****	1
(B) MATING RECEPTACLE	73277-101402LF	1

mat'l. code		surface ISO 1302		tolerance ISO 406 ISO 1101		projection		product family	
ltr		ecn no		dr		date		title	
S		N05-0087		WB		06/17/05		CARDBUS SINGLE DECK	
T		N05-0175		WB		03/23/05		2-STEP, TYPE 1/2/3	
U		N08-0028		MZ		02/22/08		dwg no 74054 sheet 1 of 10 size A4	
dr		WENDY CHEN		09/23/97		engr		STELAR CHU 09/23/97	
chr		JOSEPH HSIA		09/23/97		appd		JENN TSAO 09/23/97	
sheet index		revision sheet		U 1		U 2		U 3	
				U 4		U 5		U 6	
				U 7		U 8		U 9	
				U 10					

FCI CONFIDENTIAL



FCIconnect.com

This document is the property of and embodies CONFIDENTIAL and PROPRIETARY information of FCI. No part of the information shown on this document may be used in any way or disclosed to others without the written consent of FCI. Copyright FCI.

FCI CONFIDENTIAL

FCI

fciconnect.com

This document is the property of and embodies CONFIDENTIAL and PROPRIETARY information of FCI. No part of the information shown on this document may be used in any way or disclosed to others without the written consent of FCI. Copyright FCI.

DESCRIPTION : ABOVE PCB/BELOW PCB, DECK AND PUSH ROD LOCATION ARE AS VIEW BY USER.

PRODUCT NO.	PUSH ROD LOCATION	STAND-OFF HEIGHT	MATING RECEPTACLE	P.C.B SIDE	RECOMMENDED P.C.B LAYOUT	MOUNT STYLE TO PCB AND PUSH ROD SIDE
(A) 74054-*****			(B)			
000CASLF	RIGHT	0.0	100 POSITIONS (2x50) 0.8mm RECEPTACLE PART NO. 73277-101402LF	ABOVE	SEE DRAWING NO.: TA-1050	
020CASLF	RIGHT	2.0				
022CASLF	RIGHT	2.2				
028CASLF	RIGHT	2.8				
040CASLF	RIGHT	4.0				
043CASLF	RIGHT	4.3				
050CASLF	RIGHT	5.0				
100CASLF	LEFT	0.0				
120CASLF	LEFT	2.0				
122CASLF	LEFT	2.2				
128CASLF	LEFT	2.8	100 POSITIONS (2x50) 0.8mm RECEPTACLE PART NO. 73277-101402LF	BELOW	SEE DRAWING NO.: TA-1050	
140CASLF	LEFT	4.0				
143CASLF	LEFT	4.3				
150CASLF	LEFT	5.0				
022CARLF	RIGHT	2.2				
122CATLF	LEFT	2.2				
522CASLF	RIGHT	2.2				
540CASLF	RIGHT	4.0				
543CASLF	RIGHT	4.3				
550CASLF	RIGHT	5.0				
622CASLF	LEFT	2.2				
640CASLF	LEFT	4.0				
643CASLF	LEFT	4.3				
650CASLF	LEFT	5.0				
2-STEP CARDBUS WITH METAL COVER						
322CASLF	LEFT	2.2	100 POSITIONS (2x50) 0.8mm RECEPTACLE PART NO.	ABOVE	SEE DRAWING NO.: TA-1050	 (WITH METAL SHIELD)
2-STEP CARDBUS WITH SPECIAL PUSH ROD						
740CAS-B	LEFT PUSH ROD COLOR :BLACK	4.0	100 POSITIONS (2x50) 0.8mm RECEPTACLE PART NO.	BELOW	SEE DRAWING NO.: TA-1050	
840CAS	RIGHT PUSH ROD COLOR :BLACK	4.0	100 POSITIONS (2x50) 0.8mm RECEPTACLE PART NO.	BELOW	SEE DRAWING NO.: TA-1050	
740CAS-BLF	LEFT PUSH ROD COLOR :BLACK (Lead-Free type)	4.0	100 POSITIONS (2x50) 0.8mm RECEPTACLE PART NO.	BELOW	SEE DRAWING NO.: TA-1050	
840CASLF	RIGHT PUSH ROD COLOR :BLACK (Lead-Free type)	4.0	100 POSITIONS (2x50) 0.8mm RECEPTACLE PART NO.	BELOW	SEE DRAWING NO.: TA-1050	

- NOTES:
- 8.0mm MIN CARD EJECT.
 - EJECT TRAVEL: 9.50mm
 - MATERIAL:
 - 3.1 EJECT HEADER ASS'Y
 - PLASTIC HOUSING: LCP UL94V-0 BLACK
 - PIN: COPPER ALLOY
 - PCB: FR4
 - PLASTIC GUIDE: POLYPHTHARAMID UL94V-0 BLACK
 - PLATE: STAINLESS
 - EMI CONTACT: PHOSPHOR BRONZE
 - 3.2 RECEPTACLE
 - PLASTIC: LCP 94V-0 NATURAL
 - PIN: BeCu
 - FINISH
 - PIN :(FOR OTHER VERSIONS)
 - UNDER PLATING: 0.5um MIN. Ni
 - CONTACT AREA: 0.1um MIN. GOLD OVER 0.5um MIN. Pd-Ni
 - PIN :(FOR LEAD-FREE TYPE)
 - UNDER PLATING: 1.27um MIN. Ni
 - CONTACT AREA: 0.1um MIN. GOLD OVER 0.5um MIN. Pd-Ni
 - SOLDER TAIL: 2.5um MIN. PURE Tin.
 - GROUND SHIELD :
 - UNDER PLATING: 0.75um MIN. Ni
 - CONTACT SURFACE: 0.03um GOLD MIN. OVER PdNi 0.5um MIN.(GOLD FLASH DOUBLE SIDES) OR, 0.38um GOLD(ONE SIDE ONLY)
 - PUSH ROD LOCATION AND P.C.B. ARE AS APPEARS INSTALLED
 - DIM "X"

4.25±0.1	3.5±0.1	5.0±0.1
OTHERS	36,67	1,17,34,35,51,68
 - DO NOT TOUCH AND KEEP CLEAN THE SURFACES OF PCB OF HEADER ASS'Y.
 - P.C.B LAYOUT AND PIN ASSIGNMENT REFERED TO PART NUMBER TA-1050.
 - IF LEAD FREE P.N.THE HOUSING WILL WITHSTAND EXPOSURE TO 260°C PEAK TEMPERATURE FOR 10 SECONDS IN A WAVE SOLDER APPLICATION WITH A 1.00MM MINIMUM THICK CIRCUIT BOARD.
 - IF LEAD FREE P/N.THE PRODUCT MEETS EUROPEAN UNION DIRECTIVES AND OTHER COUNTRY REGULATIONS AS DISCRIBED IN GS-22-008
 - LEAD FREE P/N PACKAGING MEETS GS-14-920 SPECIFICATION

ORDERING INFORMATION

THREADED INSERT ASSEMBLED BY BERG		
NAME	PART NO.	Q'TY
(A) EJECT HEADER ASS'Y	74054-*****LF	1
(B) MATING RECEPTACLE	73277-101402LF	1

mat'l. code	surface ISO 1302	tolerance ISO 406 ISO 1101	projection	product family
ltr	ecn no	dr	date	tolerances unless otherwise specified
				angles linear ± 0.30
U				scale
	dr	WENDY CHEN	09/23/97	
	enr	STELAR CHU	09/23/97	
	chr	JOSEPH HSIA	09/23/97	
	appd	JENN TSAO	09/23/97	
sheet index	revision sheet			

title: CARDBUS SINGLE DECK 2-STEP, TYPE 1/2/3

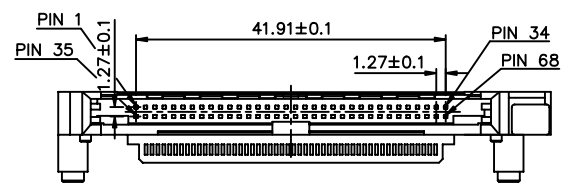
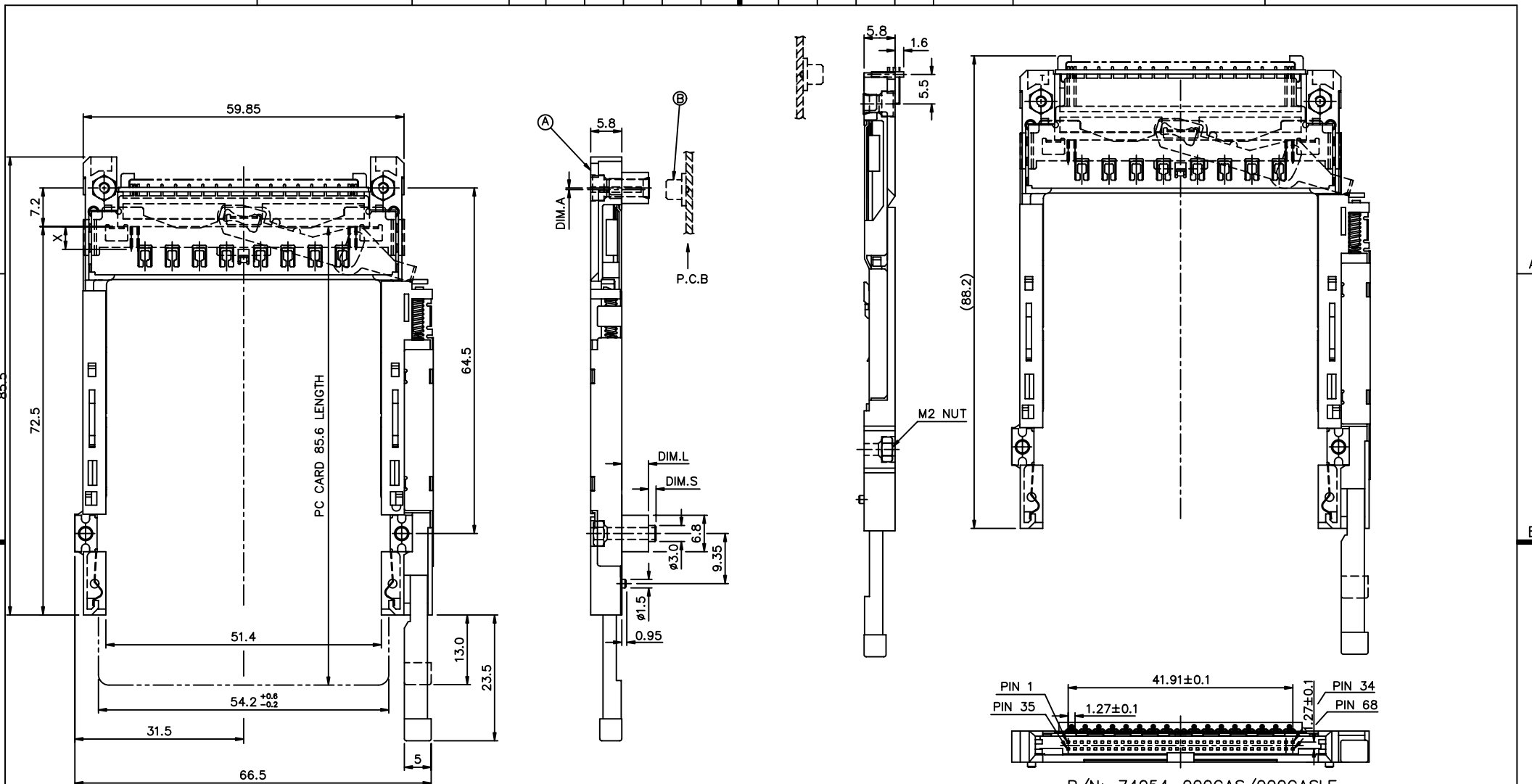
dwg no: 74054 sheet 2 of 10 size: A4

type: CUSTOMER Drawing

FCI CONFIDENTIAL

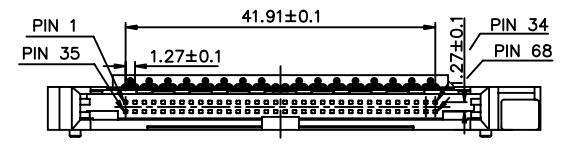
FCI
FCIconnect.com

This document is the property of and embodies CONFIDENTIAL and PROPRIETARY information of FCI. No part of the information shown on this document may be used in any way or disclosed to others without the written consent of FCI.
Copyright FCI



P/N: 74054-0**CAS/0**CASLF
ABOVE P.C.B

P/N	DIM.L	DIM.A	DIM.S
74054-020CAS/020CASLF	2.0	1.0	1.4 MAX.
74054-022CAS/022CASLF	2.2	1.0	1.0 MAX.
74054-028CAS/028CASLF	2.8	1.0	1.4 MAX.
74054-040CAS/040CASLF	4.0	0.3	1.0 MAX.
74054-043CAS/043CASLF	4.3	0.3	1.4 MAX.
74054-050CAS/050CASLF	5.0	0.3	



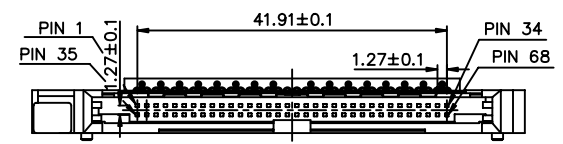
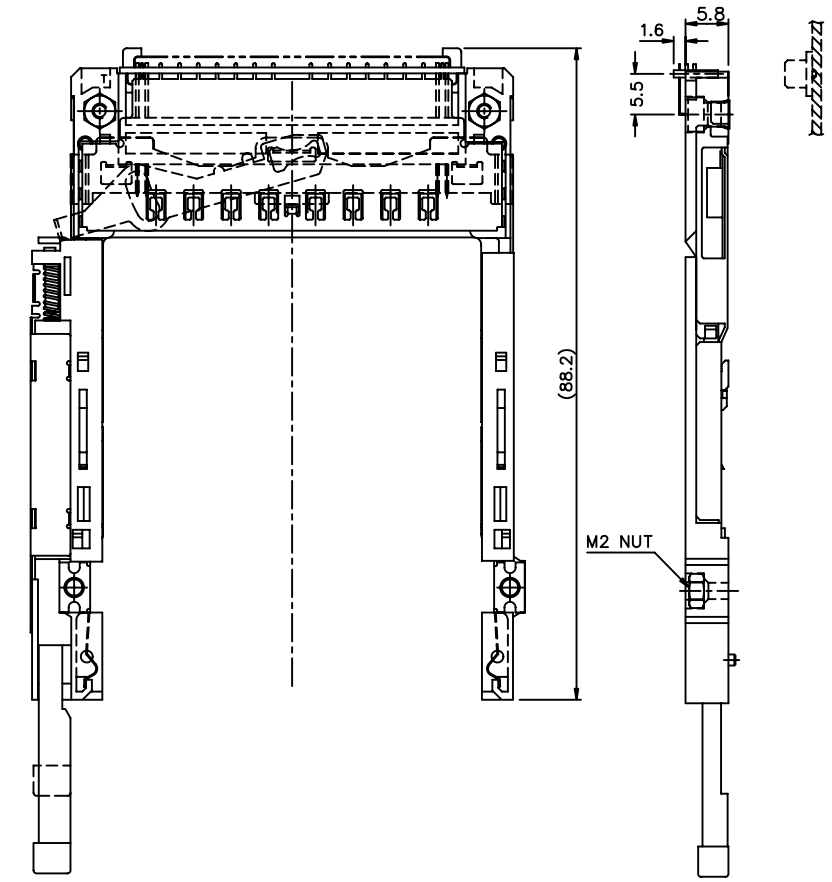
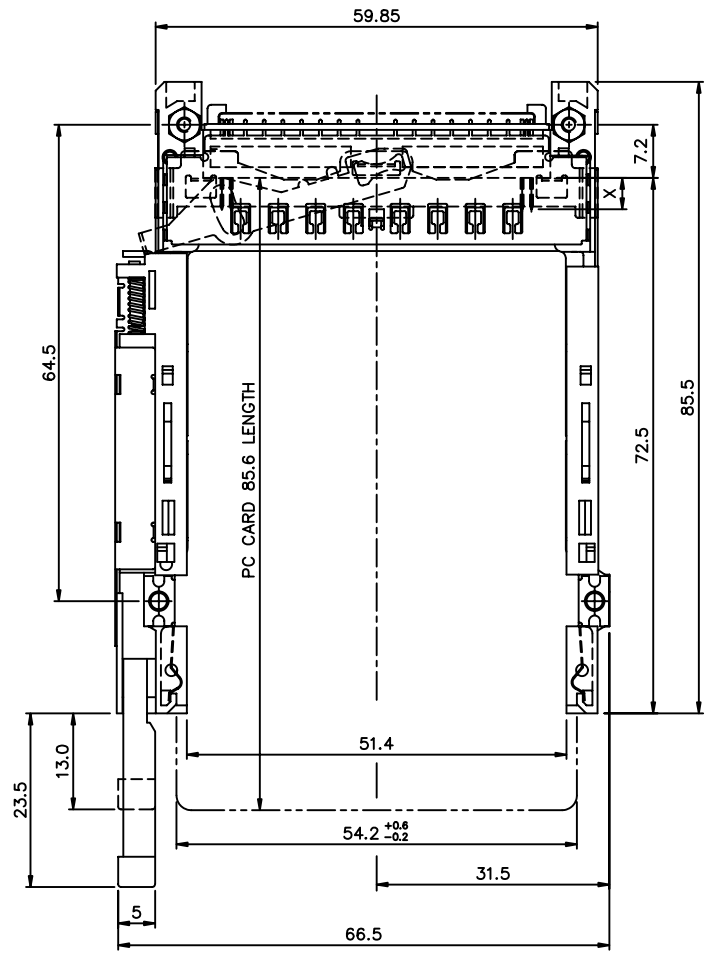
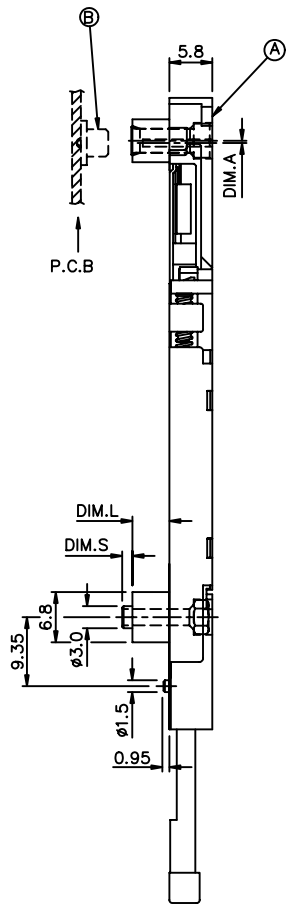
P/N: 74054-000CAS/000CASLF
ABOVE P.C.B

mat'l. code		surface	tolerance	projection	product family
ISO 1302		ISO 406	ISO 1101		
ltr	ecn no	dr	date	tolerances unless otherwise specified	
U				title	
				CARDBUS SINGLE DECK	
				2-STEP, TYPE 1/2/3	
				angles	linear
				±2'	± 0.30
					MM
					scale
		dr	WENDY CHEN	09/23/97	dwg no
		enr	STELAR CHU	09/23/97	74054
		chr	JOSEPH HSI	09/23/97	sheet 3of10
		appd	JENN TSAO	09/23/97	size
					A4
sheet	revision				type
index	sheet				CUSTOMER
					Drawing

FCI CONFIDENTIAL

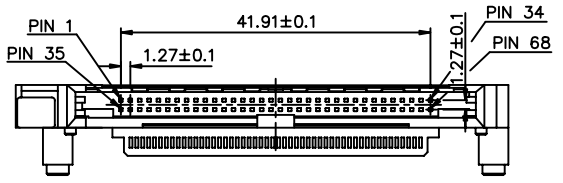
This document is the property of and embodies CONFIDENTIAL and PROPRIETARY information of FCI. No part of the information shown on this document may be used in any way or disclosed to others without the written consent of FCI.
Copyright FCI

FCI
FCIconnect.com



P/N: 74054-100CAS/100CASLF
ABOVE P.C.B

P/N	DIM.L	DIM.A	DIM.S
74054-120CAS/120CASLF	2.0	1.0	1.4 MAX.
74054-122CAS/122CASLF	2.2	1.0	1.0 MAX.
74054-128CAS/128CASLF	2.8	1.0	1.4 MAX.
74054-140CAS/140CASLF	4.0	0.3	1.0 MAX.
74054-143CAS/143CASLF	4.3	0.3	1.4 MAX.
74054-150CAS/150CASLF	5.0	0.3	1.4 MAX.



P/N: 74054-1**CAS/1**CASLF
ABOVE P.C.B

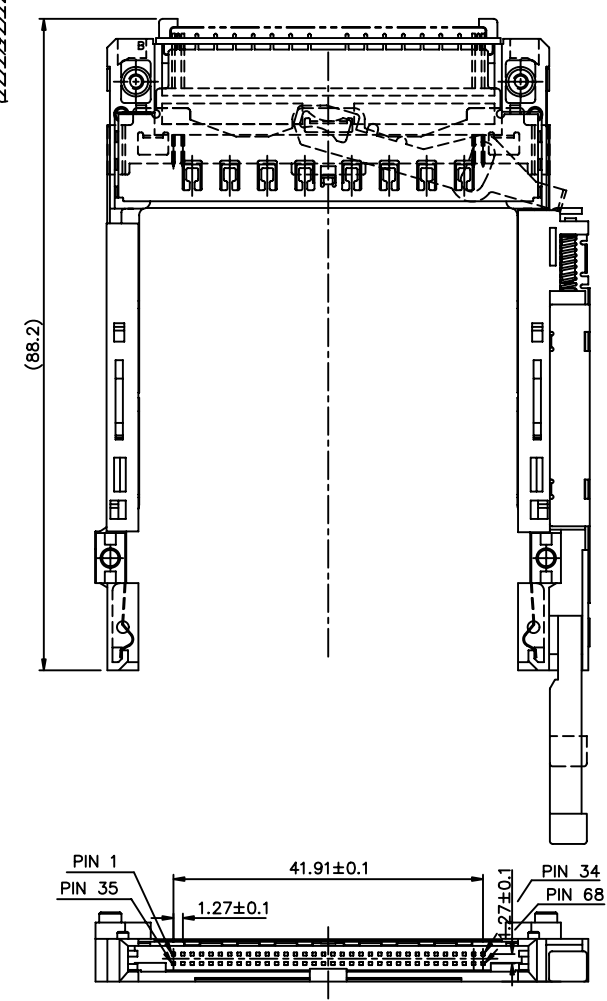
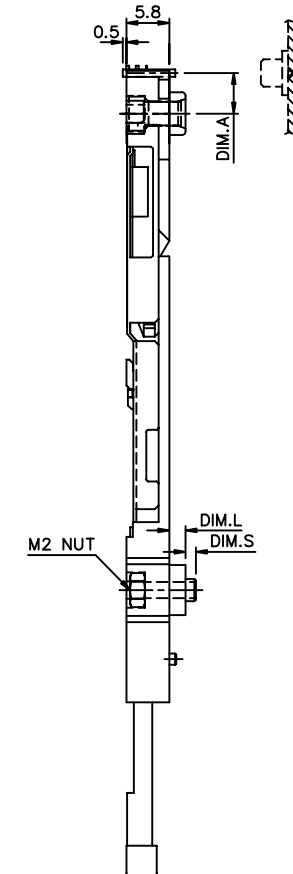
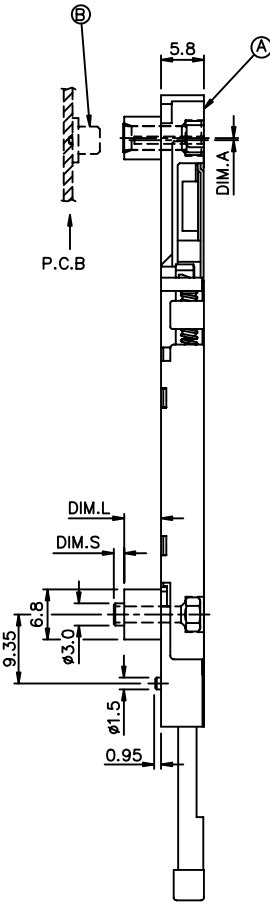
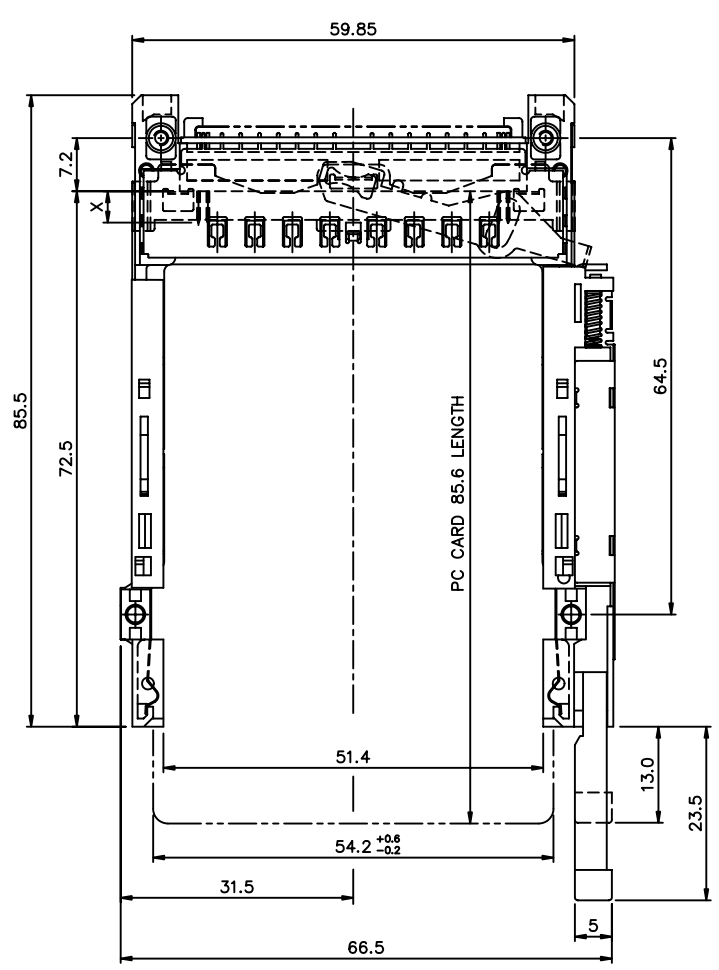
mat'l. code		surface	tolerance	projection	product family
ltr		ISO 1302	ISO 406 ISO 1101		CARDBUS SINGLE DECK 2-STEP, TYPE 1/2/3
ecn no	dr	tolerances unless otherwise specified		title	
U		angles	linear	MM	dwg no 74054 sheet 4 of 10 size A4
		±2'	± 0.30	scale	
		dr	WENDY CHEN	09/23/97	type CUSTOMER Drawing
		enr	STELAR CHU	09/23/97	
		chr	JOSEPH HSIA	09/23/97	
		appd	JENN TSAO	09/23/97	
sheet	revision				
index	sheet				



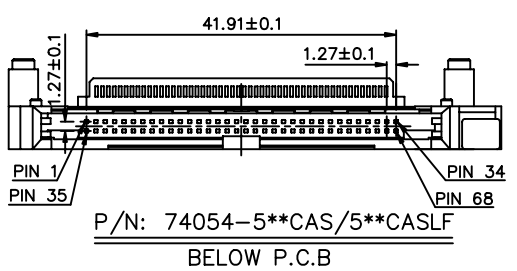
FCI CONFIDENTIAL

FCI
Fciconnect.com

This document is the property of and embodies CONFIDENTIAL and PROPRIETARY information of FCI. No part of the information shown on this document may be used in any way or disclosed to others without the written consent of FCI.
Copyright FCI



74054-522CAS/522CASLF
BELOW BOARD



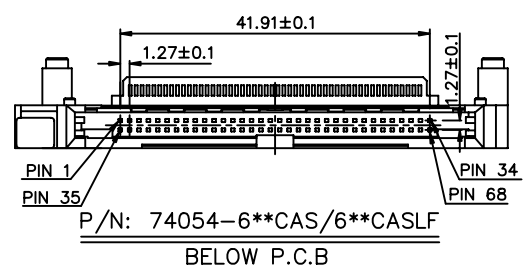
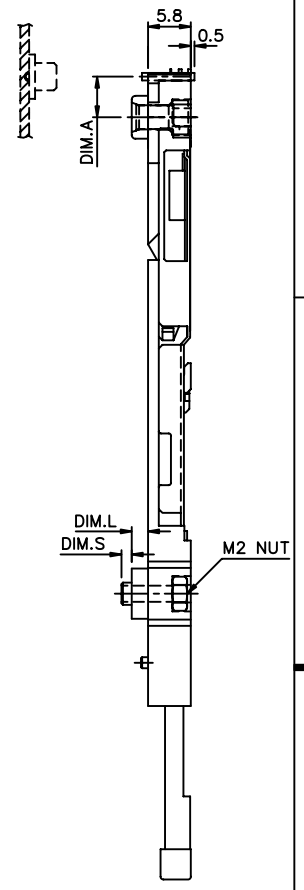
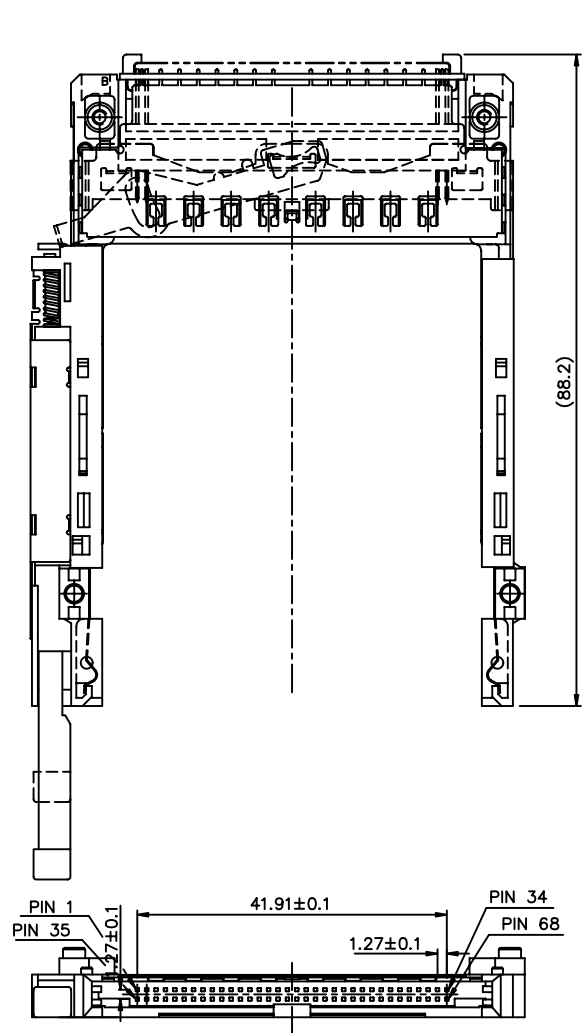
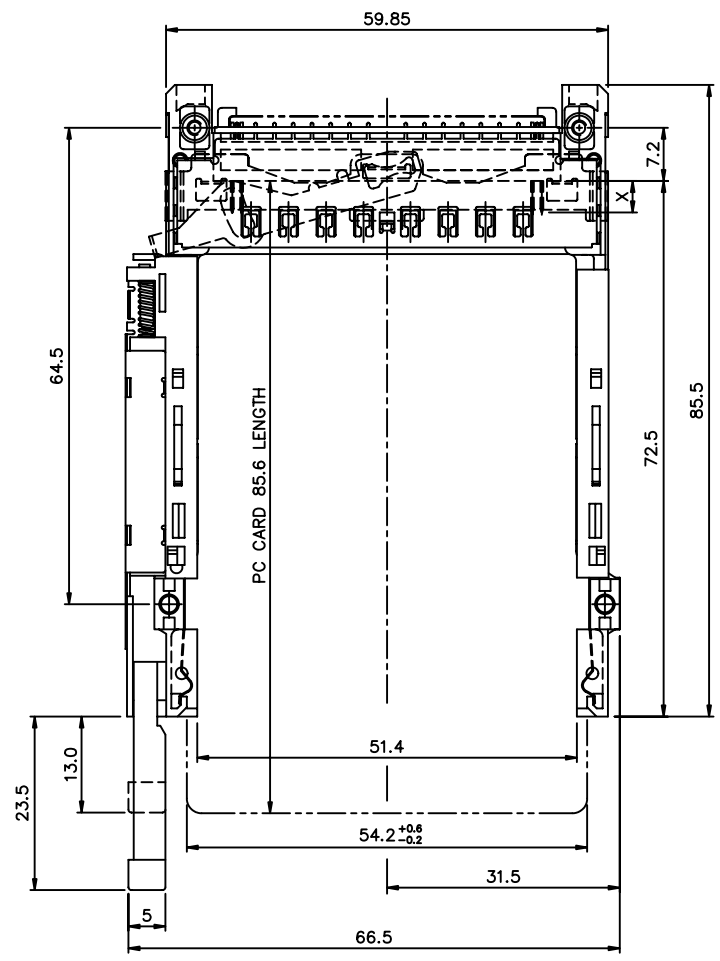
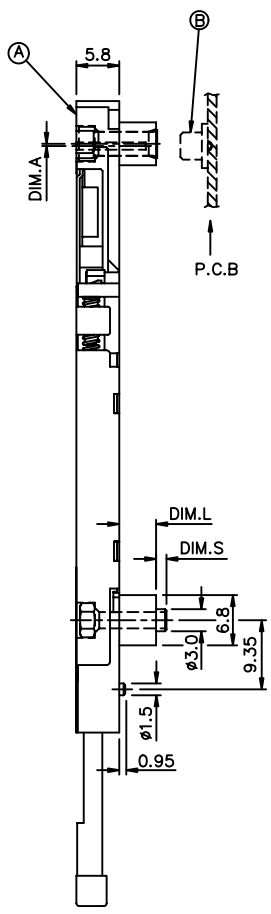
P/N	DIM.L	DIM.A	DIM.S
74054-522CAS/522CASLF	2.2	5.5	1.4 MAX.
74054-540CAS/540CASLF	4.0	0.3	1.0 MAX.
74054-543CAS/543CASLF	4.3	0.3	1.4 MAX.
74054-550CAS/550CASLF	5.0	0.3	1.4 MAX.

mat'l. code		surface	tolerance	projection	product family
ISO 1302		ISO 406	ISO 1101		
ltr ecn no dr date		tolerances unless otherwise specified			title
U		angles	linear	± 0.30	CARDBUS SINGLE DECK
		±2'		MM	2-STEP, TYPE 1/2/3
		dr	WENDY CHEN	09/23/97	dwg no
		enr	STELAR CHU	09/23/97	74054
		chr	JOSEPH HSIA	09/23/97	sheet 5 of 10
		appd	JENN TSAO	09/23/97	size A4
		type CUSTOMER			Drawing
sheet index	revision sheet				

FCI CONFIDENTIAL

FCI
FCIconnect.com

This document is the property of and embodies CONFIDENTIAL and PROPRIETARY information of FCI. No part of the information shown on this document may be used in any way or disclosed to others without the written consent of FCI.
Copyright FCI



P/N	DIM.L	DIM.A	DIM.S
74054-622CAS/622CASLF	2.2	5.5	1.4 MAX.
74054-640CAS/640CASLF	4.0	0.3	1.0 MAX.
74054-643CAS/643CASLF	4.3	0.3	1.4 MAX.
74054-650CAS/650CASLF	5.0	0.3	

74054-622CAS/622CASLF
BELOW BOARD

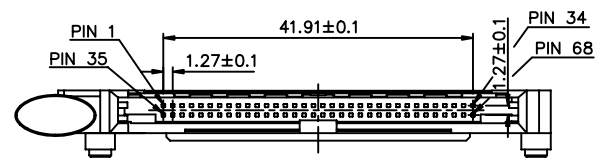
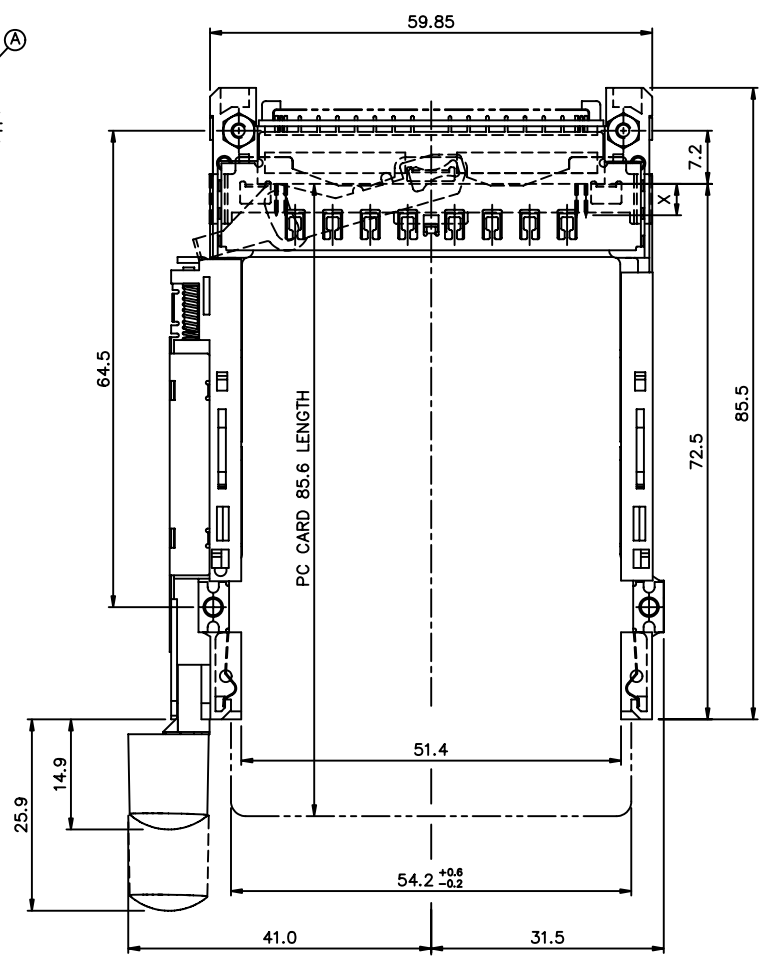
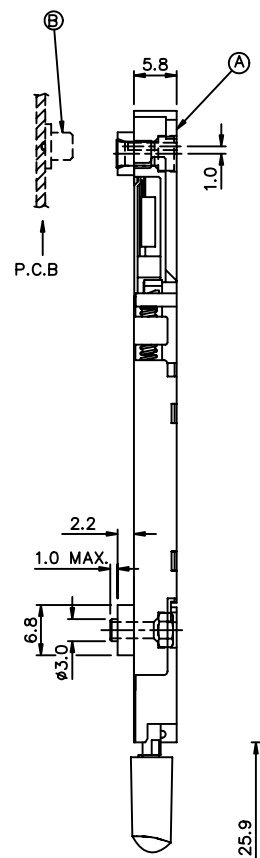
mat'l. code		surface	tolerance	projection	product family	
ltr		ISO 1302	ISO 406 ISO 1101		CARDBUS SINGLE DECK 2-STEP, TYPE 1/2/3	
ecn no		tolerances unless otherwise specified				title
dr		angles	linear	± 0.30	dwg no	
date		±2'		MM		sheet 6of10
U		scale			size	
		dr	WENDY CHEN	09/23/97	74054	
		enr	STELAR CHU	09/23/97		
		chr	JOSEPH HSIA	09/23/97		
		appd	JENN TSAO	09/23/97		
sheet	revision	type CUSTOMER				Drawing
index	sheet					



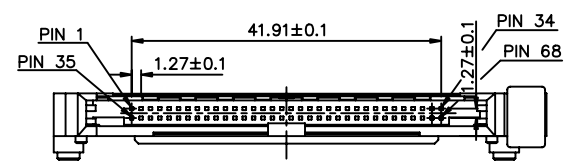
FCI CONFIDENTIAL

FCI
FCIconnect.com

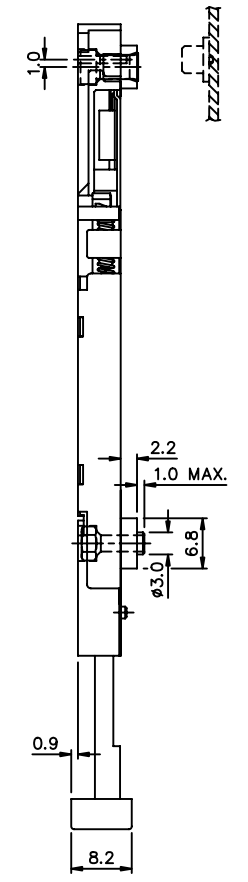
This document is the property of and embodies CONFIDENTIAL and PROPRIETARY information of FCI. No part of the information shown on this document may be used in any way or disclosed to others without the written consent of FCI.
Copyright FCI



P/N: 74054-122CAT/122CATLF
ABOVE P.C.B



P/N: 74054-022CAR /022CARLF
ABOVE P.C.B



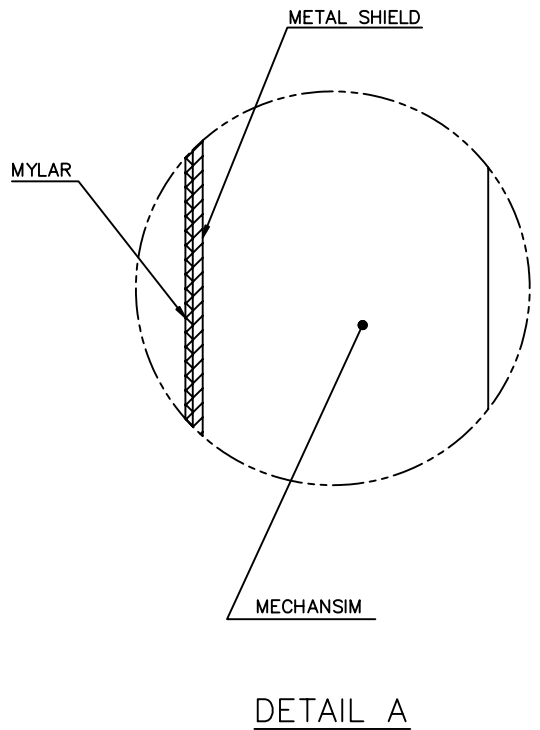
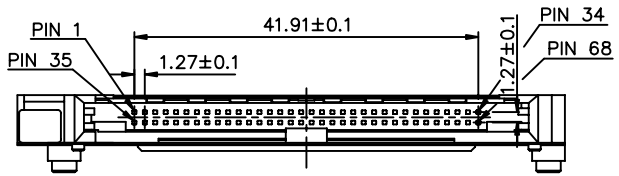
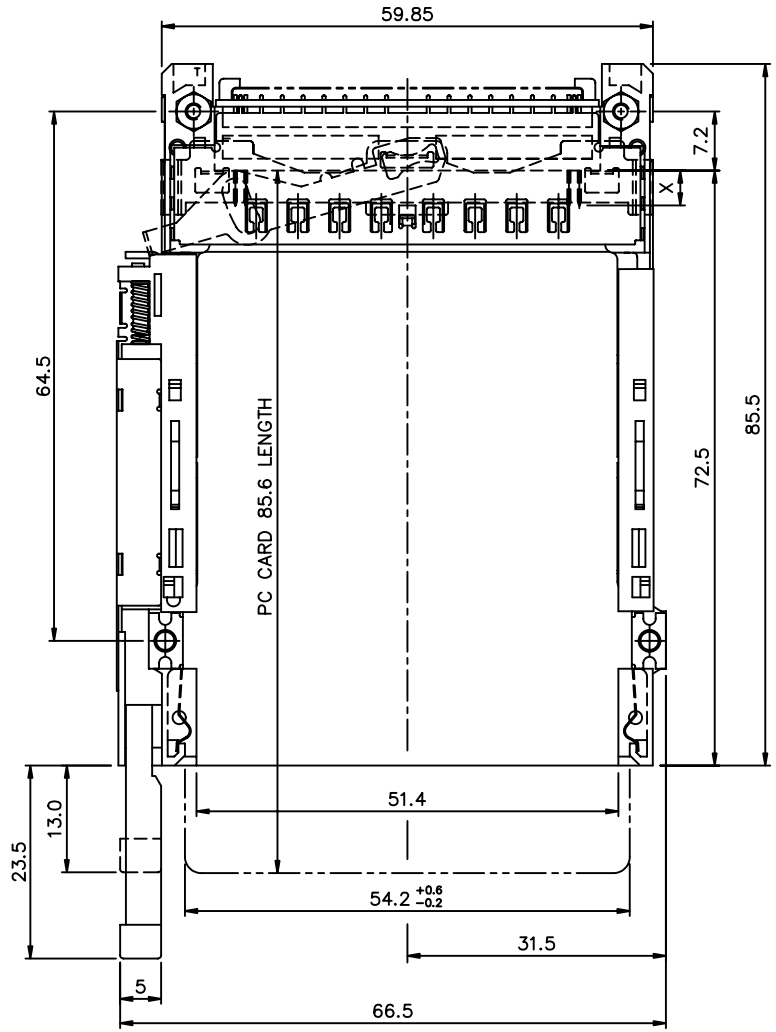
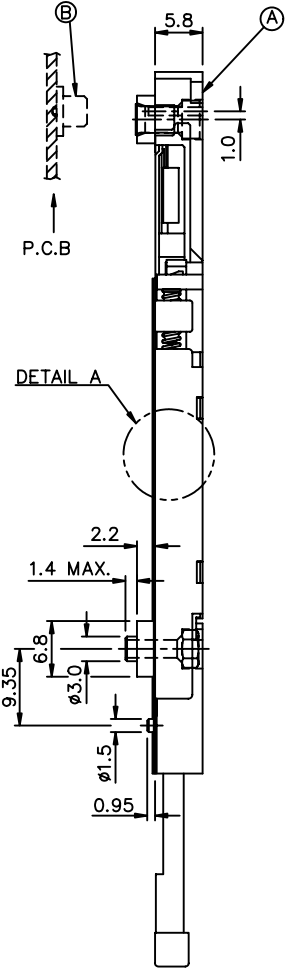
mat'l. code		surface ISO 1302		tolerance ISO 406 ISO 101		projection 101		product family	
ltr		ecm no		dr		date		title	
U				angles		linear		± 0.30	
				±2'				MM	
								scale	
		dr		WENDY CHEN		09/23/97		CARDBUS SINGLE DECK	
		enr		STELAR CHU		09/23/97		2-STEP, TYPE 1/2/3	
		chr		JOSEPH HSIA		09/23/97		dwg no	
		appd		JENN TSAO		09/23/97		74054	
								sheet 7 of 10	
								size	
								A4	
								type	
								CUSTOMER Drawing	
sheet		revision							
index		sheet							

FCI CONFIDENTIAL

This document is the property of and embodies CONFIDENTIAL and PROPRIETARY information of FCI. No part of the information shown on this document may be used in any way or disclosed to others without the written consent of FCI.
Copyright FCI

FCI
FCIconnect.com

PART NUMBER
74054-322CAS
74054-322CASLF



mat'l. code		surface ISO 1302		tolerance ISO 406 ISO 1101		projection 1:1		product family	
ltr		ecn no		dr		date		title	
U				angles		linear		± 0.30	
				±2'		scale		MM	
		dr		WENDY CHEN		09/23/97		dwg no	
		enr		STELAR CHU		09/23/97		sheet 8 of 10	
		chr		JOSEPH HSIA		09/23/97		74054	
		appd		JENN TSAO		09/23/97		size A4	
sheet		revision						type	
index		sheet						CUSTOMER Drawing	

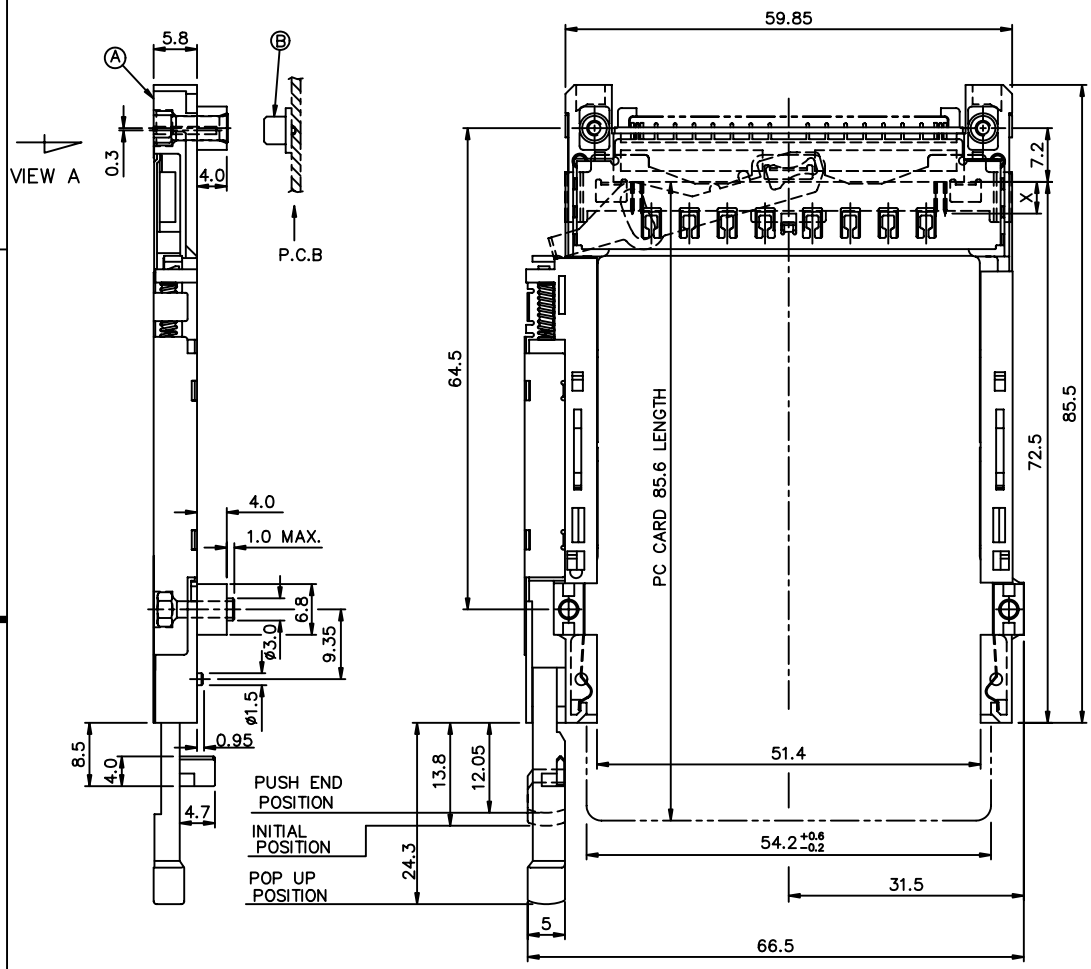
FCI CONFIDENTIAL

This document is the property of and embodies CONFIDENTIAL and PROPRIETARY information of FCI. No part of the information shown on this document may be used in any way or disclosed to others without the written consent of FCI.
Copyright FCI

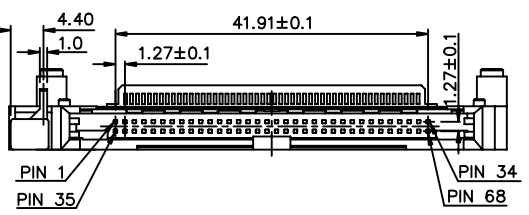
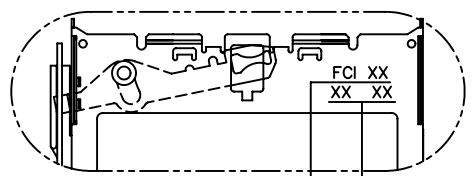


FCIconnect.com

PART NUMBER	PUSH ROD COLOR
74054-740CAS-B	BLACK

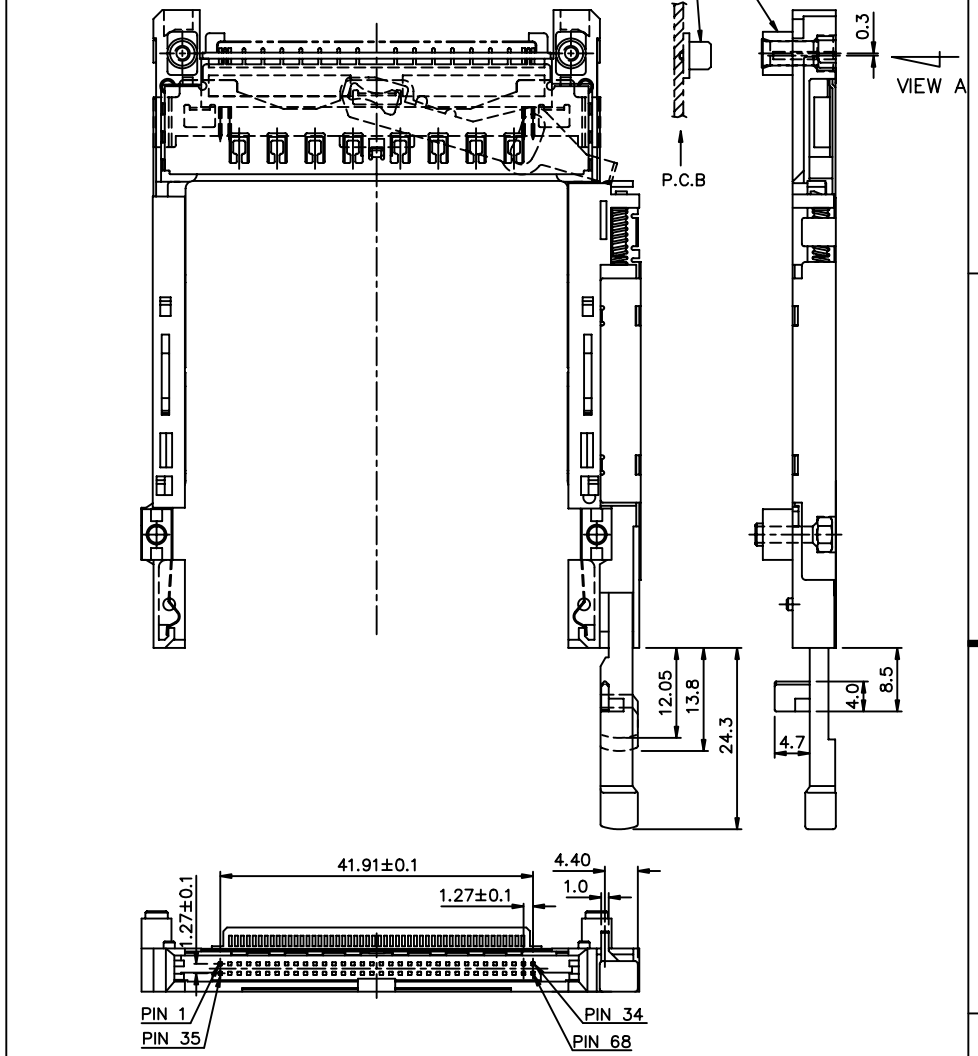


VIEW A
(FOR 74054-740CAS-B/840CAS ONLY)



XX XX : MONTH / DAY
(MANUFACTURE DATE)
XX: YEAR

PART NUMBER	PUSH ROD COLOR
74054-840CAS	BLACK



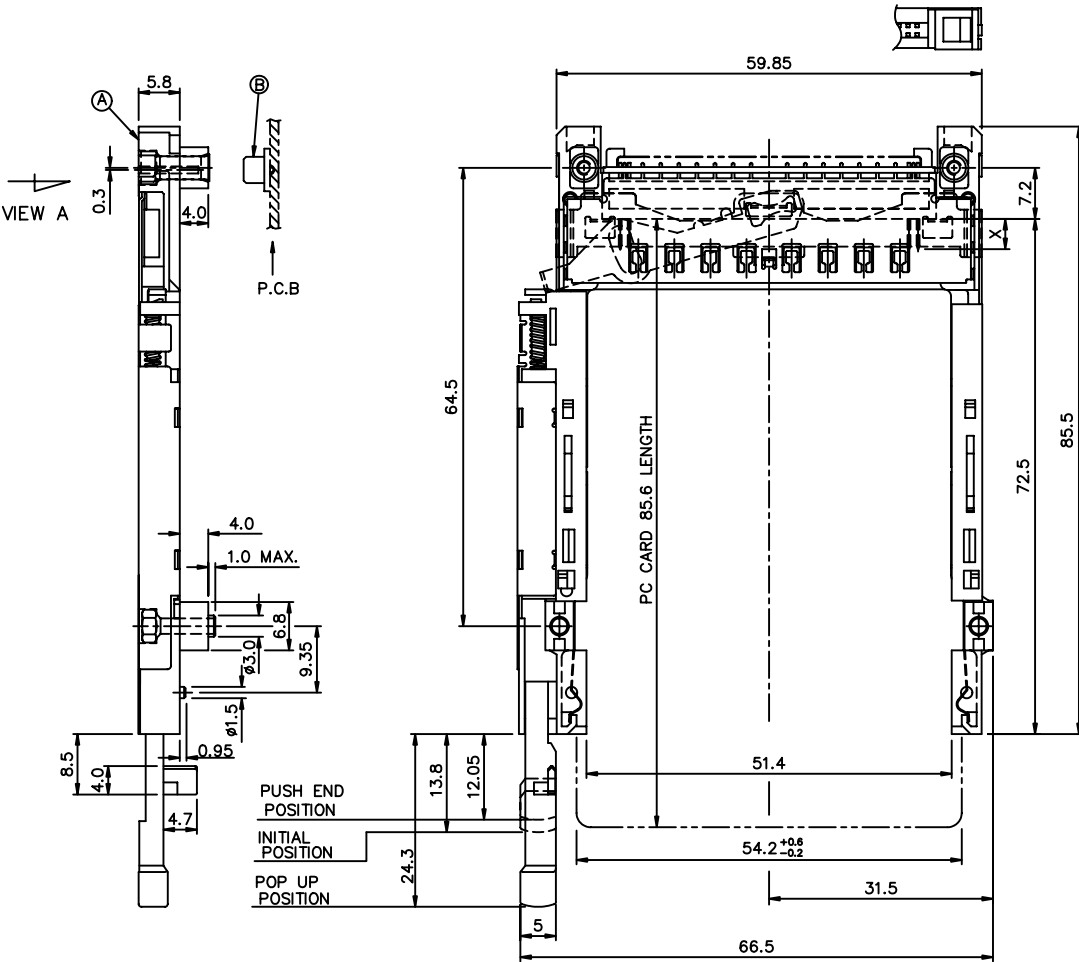
mat'l. code		surface	tolerance	projection	product family
		ISO 1302	ISO 406 ISO 1101		
ltr ecn no dr date		tolerances unless otherwise specified			title
U		angles	linear	± 0.30	CARDBUS SINGLE DECK 2-STEP, TYPE 1/2/3
		±2'		MM	
		scale			dwg no
		dr	WENDY CHEN	09/23/97	sheet 9 of 10
		enr	STELAR CHU	09/23/97	74054
		chr	JOSEPH HSIA	09/23/97	A4
		appd	JENN TSAO	09/23/97	type CUSTOMER Drawing
sheet	revision				
index	sheet				

FCI CONFIDENTIAL

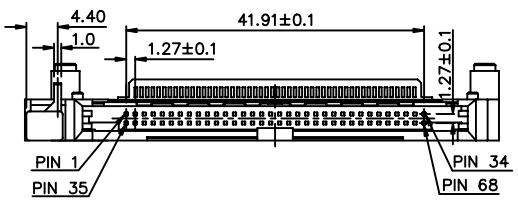
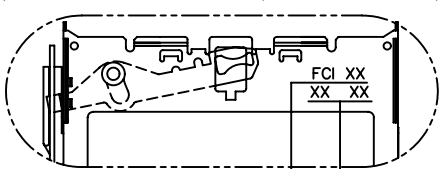
FCI
FCIconnect.com

This document is the property of and embodies CONFIDENTIAL and PROPRIETARY information of FCI. No part of the information shown on this document may be used in any way or disclosed to others without the written consent of FCI.
Copyright FCI

PART NUMBER	PUSH ROD COLOR
74054-740CAS-BLF	BLACK



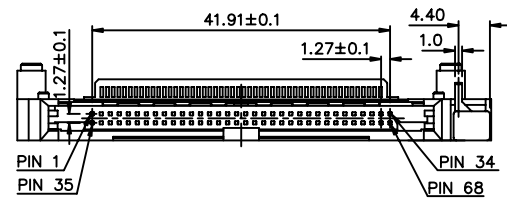
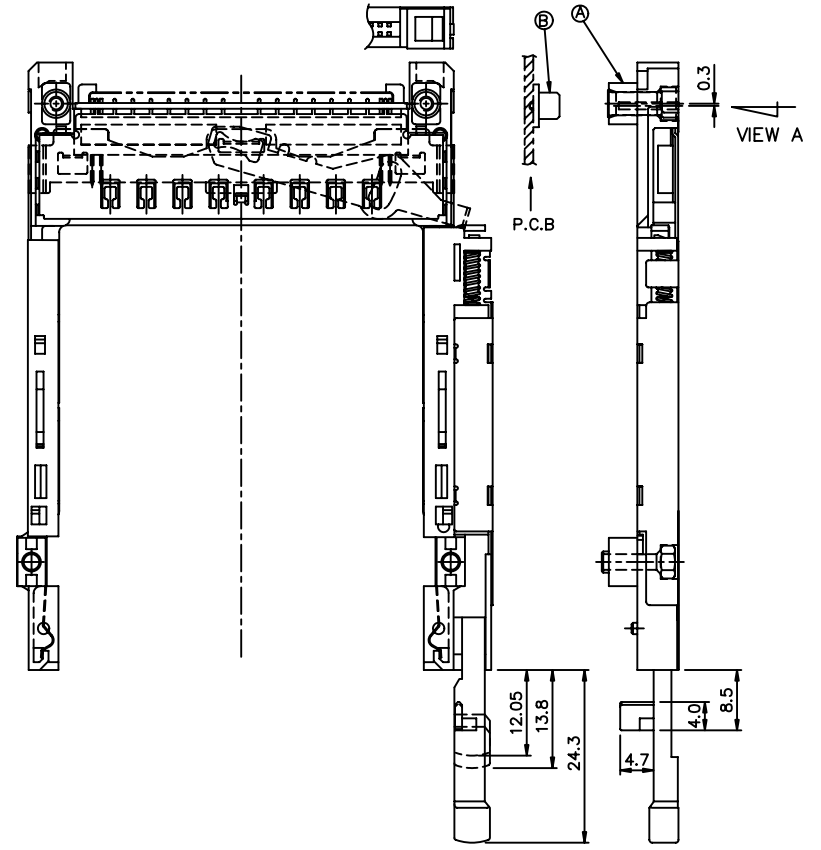
VIEW A
(FOR 74054-740CAS-BLF/840CASLF ONLY)



XX XX : MONTH / DAY
(MANUFACTURE DATE)
XX: YEAR

PART NUMBER	PUSH ROD COLOR
74054-840CASLF	BLACK

PART NUMBER
74054-322CAS
74054-322CASLF



mat'l. code		surface		tolerance		projection		product family	
		ISO 1302		ISO 406 ISO 101		MM		CARDBUS SINGLE DECK	
ltr		ecn no		dr		date		title	
U								2-STEP, TYPE 1/2/3	
		angles		linear		± 0.30		dwg no	
		±2'						74054	
		dr		WENDY CHEN		09/23/97		sheet 10 of 10	
		enr		STELAR CHU		09/23/97		size	
		chr		JOSEPH HSIA		09/23/97		A4	
		appd		JENN TSAO		09/23/97		type	
								CUSTOMER Drawing	
sheet		revision							
index		sheet							